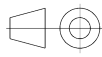

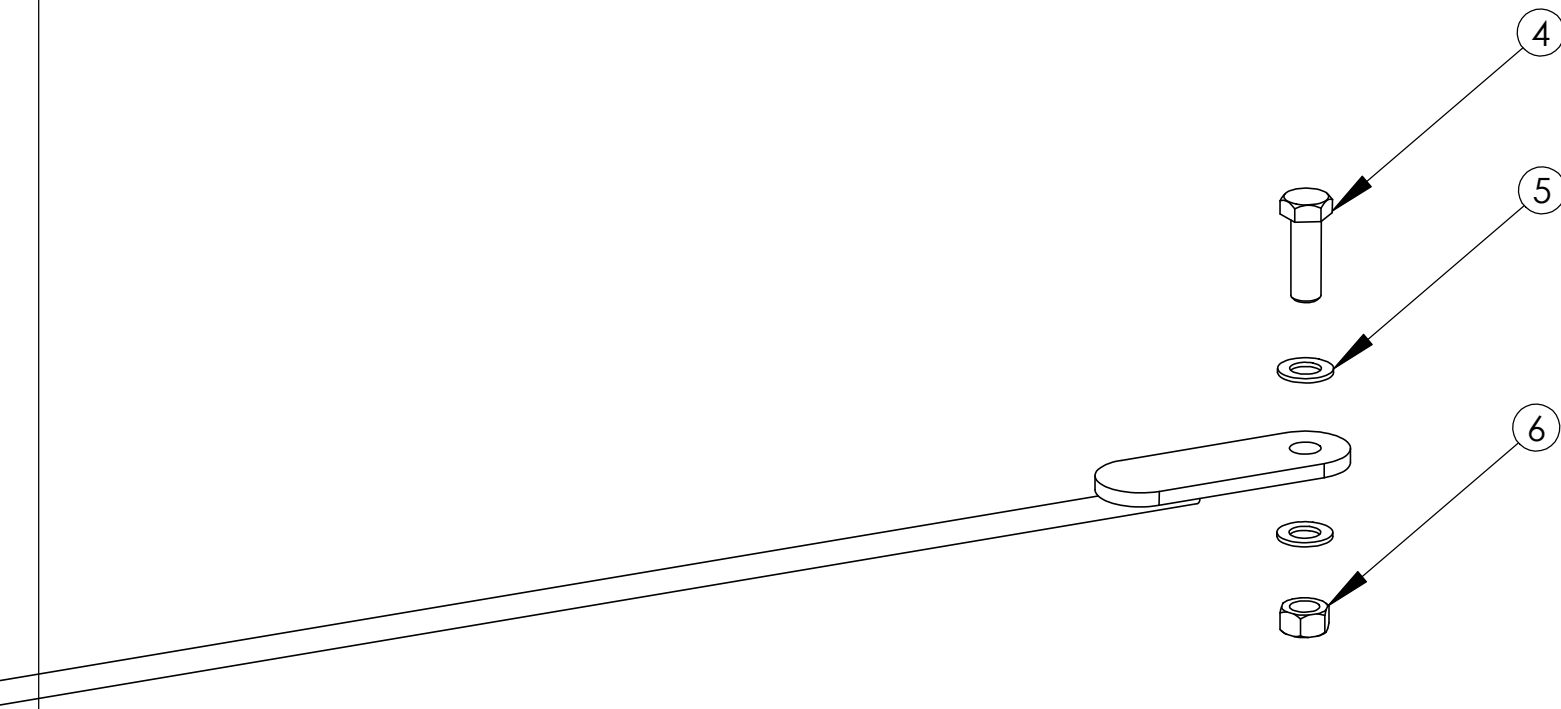
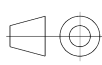

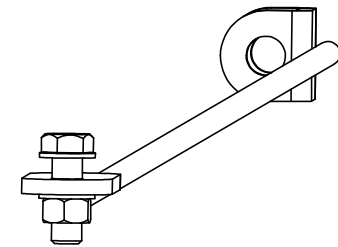
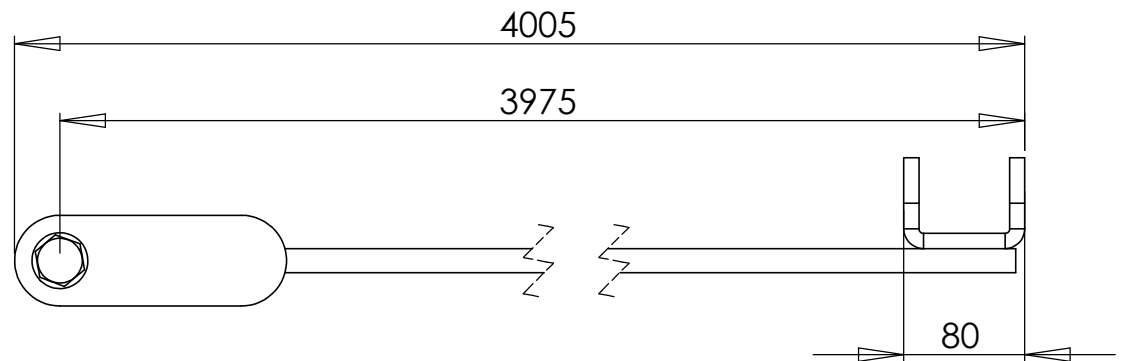
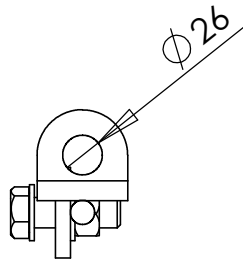


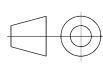

DO NOT SCALE DRAWING SHEET 1 OF 3	WEIGHT: 7933.66			Rank Steel A/S 	
UNLESS OTHERWISE SPECIFIED: DIMENSIONS ARE IN MILLIMETERS TOLERANCES: LINEAR: According to ANGULAR: DIN 7168-g		NAME	DATE	PROJECT / CLIENT	
	DRAWN	jo	12-07-2010		
	CHECKED			TITLE:	
PROPRIETARY AND CONFIDENTIAL THE INFORMATION CONTAINED IN THIS DRAWING IS THE SOLE PROPERTY OF RANK STEEL A/S. ANY REPRODUCTION IN PART OR AS A WHOLE WITHOUT THE WRITTEN PERMISSION OF RANK STEEL A/S IS PROHIBITED.	Processes: welding galvanized - According to ISO 1461 (thickness 90-115 my)			Wind cross, ø16 (4250)	
	Remarks:			DWG NO. 900850	REVISION 0

ITEM NO.	QTY.	PART NO.	REVISION	DESCRIPTION	DIN-ISO	REMARKS
1	1	801290	0	Rod, ø16 (4250)		L=3889mm
2	1	801070	0	Wind cross tightening bracket		
3	1	801060	0	Wind cross endbracket		
4	1	800320	0	M20x60	DIN 933	8.8 - galvanized
5	2	801140	0	Washer ø37/21x3	DIN 125	Galvanized
6	1	800350	0	M20 nut	DIN 934	8.8 - galvanized



DO NOT SCALE DRAWING SHEET 2 OF 3		WEIGHT: 7933.66				Rank Steel A/S  Industrivej 23 - 6900 Skjern - Denmark www.ranksteel.com	
UNLESS OTHERWISE SPECIFIED: DIMENSIONS ARE IN MILLIMETERS TOLERANCES: LINEAR: According to ANGULAR: DIN 7168-g			NAME	DATE	PROJECT / CLIENT		
		DRAWN	jo	12-07-2010			
		CHECKED			TITLE:		
PROPRIETARY AND CONFIDENTIAL THE INFORMATION CONTAINED IN THIS DRAWING IS THE SOLE PROPERTY OF RANK STEEL A/S. ANY REPRODUCTION IN PART OR AS A WHOLE WITHOUT THE WRITTEN PERMISSION OF RANK STEEL A/S IS PROHIBITED.		Processes: assembly			Wind cross, ø16 (4250)		
		Remarks:			DWG NO. 900850		REVISION 0



DO NOT SCALE DRAWING SHEET 3 OF 3	WEIGHT:			Rank Steel A/S 	
				Industrivej 23 - 6900 Skjern - Denmark www.ranksteel.com	
UNLESS OTHERWISE SPECIFIED: DIMENSIONS ARE IN MILLIMETERS TOLERANCES: LINEAR: According to ANGULAR: DIN 7168-g		NAME	DATE	PROJECT / CLIENT	
	DRAWN	jo	12-07-2010		
PROPRIETARY AND CONFIDENTIAL THE INFORMATION CONTAINED IN THIS DRAWING IS THE SOLE PROPERTY OF RANK STEEL A/S. ANY REPRODUCTION IN PART OR AS A WHOLE WITHOUT THE WRITTEN PERMISSION OF RANK STEEL A/S IS PROHIBITED.	CHECKED			TITLE:	
	Processes: assembly			Wind cross, ø16 (4250)	
	Remarks:			DWG NO.	900850