

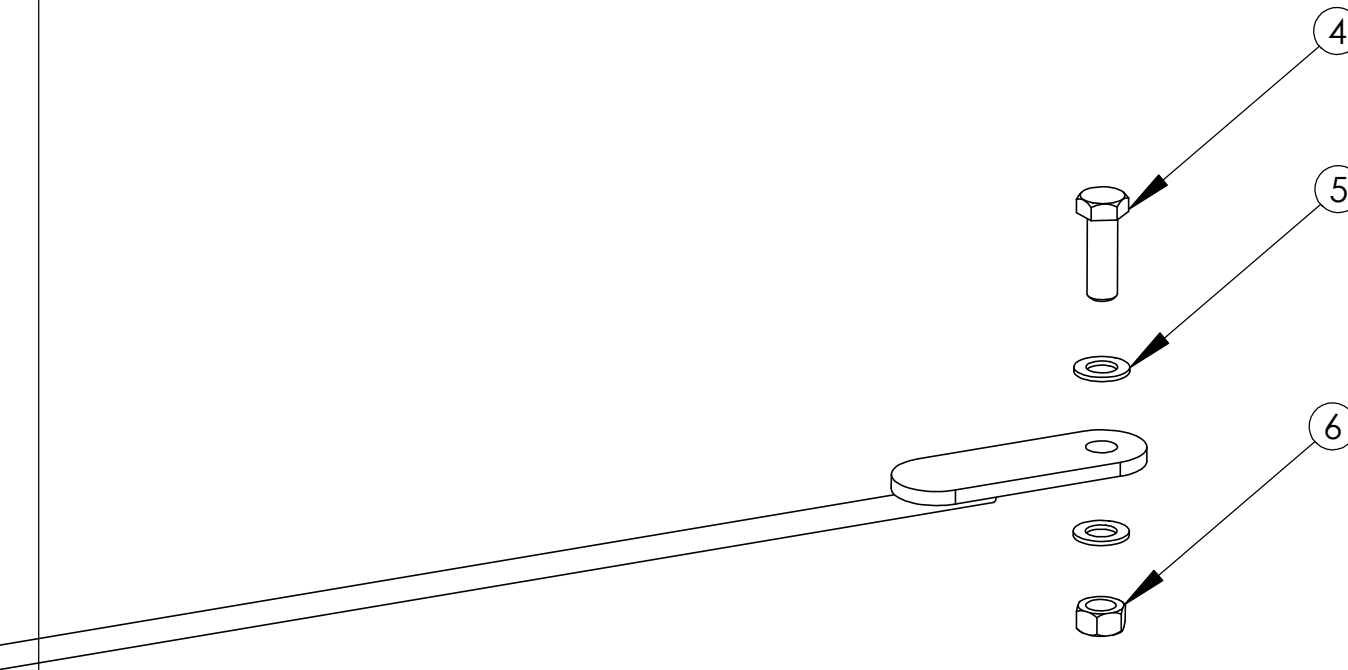


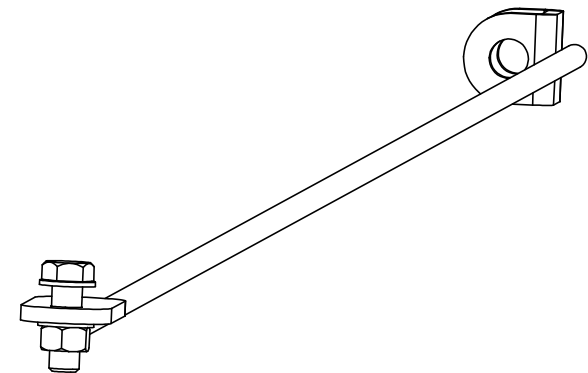
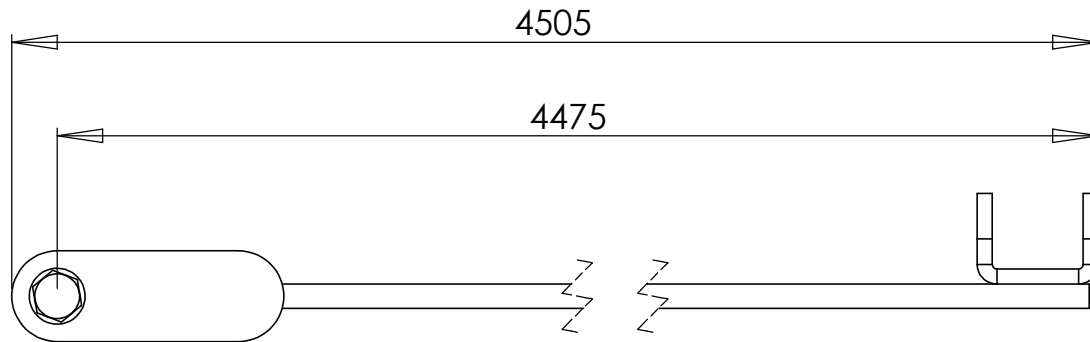
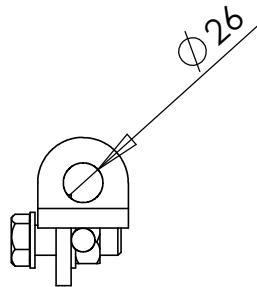


DO NOT SCALE DRAWING SHEET 1 OF 3	WEIGHT:  8727.86			Rank Steel A/S 	
				Industrivej 23 - 6900 Skjern - Denmark <a href="http://www.ranksteel.com">www.ranksteel.com</a>	
UNLESS OTHERWISE SPECIFIED: DIMENSIONS ARE IN MILLIMETERS TOLERANCES: LINEAR: According to ANGULAR: DIN 7168-g		NAME	DATE	PROJECT / CLIENT	
	DRAWN	jo	12-07-2010		
	CHECKED			TITLE:  Wind cross, ø16 (4750)	
PROPRIETARY AND CONFIDENTIAL  THE INFORMATION CONTAINED IN THIS DRAWING IS THE SOLE PROPERTY OF RANK STEEL A/S. ANY REPRODUCTION IN PART OR AS A WHOLE WITHOUT THE WRITTEN PERMISSION OF RANK STEEL A/S IS PROHIBITED.	Processes: welding galvanized - According to ISO 1461 (thickness 90-115 my)			DWG NO.  900870	REVISION  0
	Remarks:				

ITEM NO.	QTY.	PART NO.	REVISION	DESCRIPTION	DIN-ISO	REMARKS
1	1	801310	0	Rod, $\varnothing 16$ (4750)		L=4389mm
2	1	801070	0	Wind cross tightening bracket		
3	1	801060	0	Wind cross endbracket		
4	1	800320	0	M20x60	DIN 933	8.8 - galvanized
5	2	801140	0	Washer $\varnothing 37/21 \times 3$	DIN 125	Galvanized
6	1	800350	0	M20 nut	DIN 934	8.8 - galvanized



DO NOT SCALE DRAWING SHEET 2 OF 3	WEIGHT:  8727.86			Rank Steel A/S  Industrivej 23 - 6900 Skjern - Denmark <a href="http://www.ranksteel.com">www.ranksteel.com</a>
UNLESS OTHERWISE SPECIFIED: DIMENSIONS ARE IN MILLIMETERS TOLERANCES: LINEAR: According to ANGULAR: DIN 7168-g		NAME	DATE	PROJECT / CLIENT
	DRAWN	jo	12-07-2010	
PROPRIETARY AND CONFIDENTIAL  THE INFORMATION CONTAINED IN THIS DRAWING IS THE SOLE PROPERTY OF RANK STEEL A/S. ANY REPRODUCTION IN PART OR AS A WHOLE WITHOUT THE WRITTEN PERMISSION OF RANK STEEL A/S IS PROHIBITED.	CHECKED			TITLE:  Wind cross, ø16 (4750)
	Processes:  assembly			DWG NO.  900870
	Remarks:			



DO NOT SCALE DRAWING SHEET 3 OF 3	WEIGHT:			Rank Steel A/S Industrivej 23 - 6900 Skjern - Denmark www.ranksteel.com
UNLESS OTHERWISE SPECIFIED: DIMENSIONS ARE IN MILLIMETERS TOLERANCES: LINEAR: According to ANGULAR: DIN 7168-g		NAME	DATE	PROJECT / CLIENT
	DRAWN	jo	12-07-2010	
	CHECKED			TITLE:
<b>PROPRIETARY AND CONFIDENTIAL</b>  THE INFORMATION CONTAINED IN THIS DRAWING IS THE SOLE PROPERTY OF RANK STEEL A/S. ANY REPRODUCTION IN PART OR AS A WHOLE WITHOUT THE WRITTEN PERMISSION OF RANK STEEL A/S IS PROHIBITED.	Processes: assembly			Wind cross, ø16 (4750)
	Remarks:			DWG NO. 900870 REVISION 0