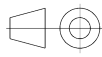

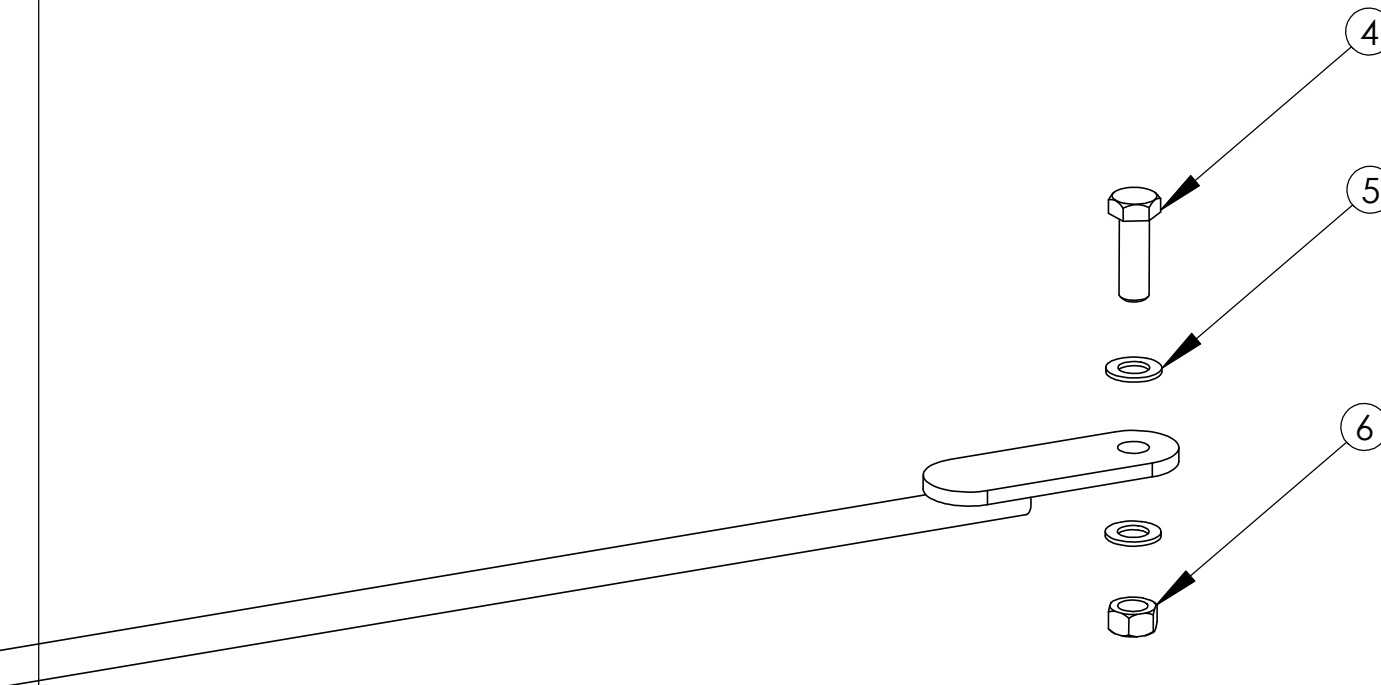
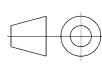

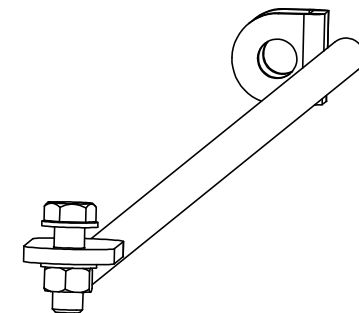
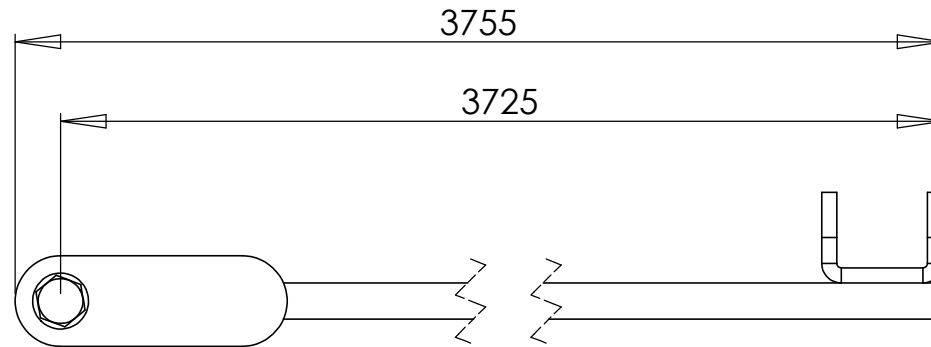
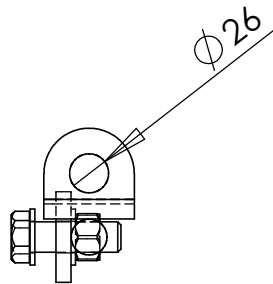


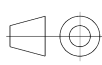
DO NOT SCALE DRAWING SHEET 1 OF 3	WEIGHT: 14761.75			Rank Steel A/S  Industrivej 23 - 6900 Skjern - Denmark www.ranksteel.com	
UNLESS OTHERWISE SPECIFIED: DIMENSIONS ARE IN MILLIMETERS TOLERANCES: LINEAR: According to ANGULAR: DIN 7168-g		NAME	DATE	PROJECT / CLIENT	
	DRAWN	jo	12-07-2010		
	CHECKED			TITLE:	
PROPRIETARY AND CONFIDENTIAL THE INFORMATION CONTAINED IN THIS DRAWING IS THE SOLE PROPERTY OF RANK STEEL A/S. ANY REPRODUCTION IN PART OR AS A WHOLE WITHOUT THE WRITTEN PERMISSION OF RANK STEEL A/S IS PROHIBITED.	Processes: welding galvanized - According to ISO 1461 (thickness 90-115 my)			Wind cross, ø24 (4000)	
	Remarks:			DWG NO. 900890	REVISION 0

ITEM NO.	QTY.	PART NO.	REVISION	DESCRIPTION	DIN-ISO	REMARKS
1	1	801330	0	Rod, ø24 (4000)		L=3639mm
2	1	801070	0	Wind cross tightening bracket		
3	1	801060	0	Wind cross endbracket		
4	1	800320	0	M20x60	DIN 933	8.8 - galvanized
5	2	801140	0	Washer ø37/21x3	DIN 125	Galvanized
6	1	800350	0	M20 nut	DIN 934	8.8 - galvanized



DO NOT SCALE DRAWING SHEET 2 OF 3	WEIGHT: 14761.75			Rank Steel A/S  Industrivej 23 - 6900 Skjern - Denmark www.ranksteel.com	
UNLESS OTHERWISE SPECIFIED: DIMENSIONS ARE IN MILLIMETERS TOLERANCES: LINEAR: According to ANGULAR: DIN 7168-g		NAME	DATE	PROJECT / CLIENT	
	DRAWN	jo	12-07-2010		
	CHECKED			TITLE:	
PROPRIETARY AND CONFIDENTIAL THE INFORMATION CONTAINED IN THIS DRAWING IS THE SOLE PROPERTY OF RANK STEEL A/S. ANY REPRODUCTION IN PART OR AS A WHOLE WITHOUT THE WRITTEN PERMISSION OF RANK STEEL A/S IS PROHIBITED.	Processes: assembly			Wind cross, ø24 (4000)	
	Remarks:			DWG NO.	REVISION
				900890	0



DO NOT SCALE DRAWING SHEET 3 OF 3	WEIGHT:			<div>Rank Steel A/S</div> <div>Industrivej 23 - 6900 Skjern - Denmark www.ranksteel.com</div>
UNLESS OTHERWISE SPECIFIED: DIMENSIONS ARE IN MILLIMETERS TOLERANCES: LINEAR: According to ANGULAR: DIN 7168-g		NAME	DATE	PROJECT / CLIENT
	DRAWN	jo	12-07-2010	
	CHECKED			TITLE:
<div>PROPRIETARY AND CONFIDENTIAL</div> <div>THE INFORMATION CONTAINED IN THIS DRAWING IS THE SOLE PROPERTY OF RANK STEEL A/S. ANY REPRODUCTION IN PART OR AS A WHOLE WITHOUT THE WRITTEN PERMISSION OF RANK STEEL A/S IS PROHIBITED.</div>	Processes: assembly			Wind cross, ø24 (4000)
	Remarks:			<div>DWG NO. 900890</div> <div>REVISION 0</div>